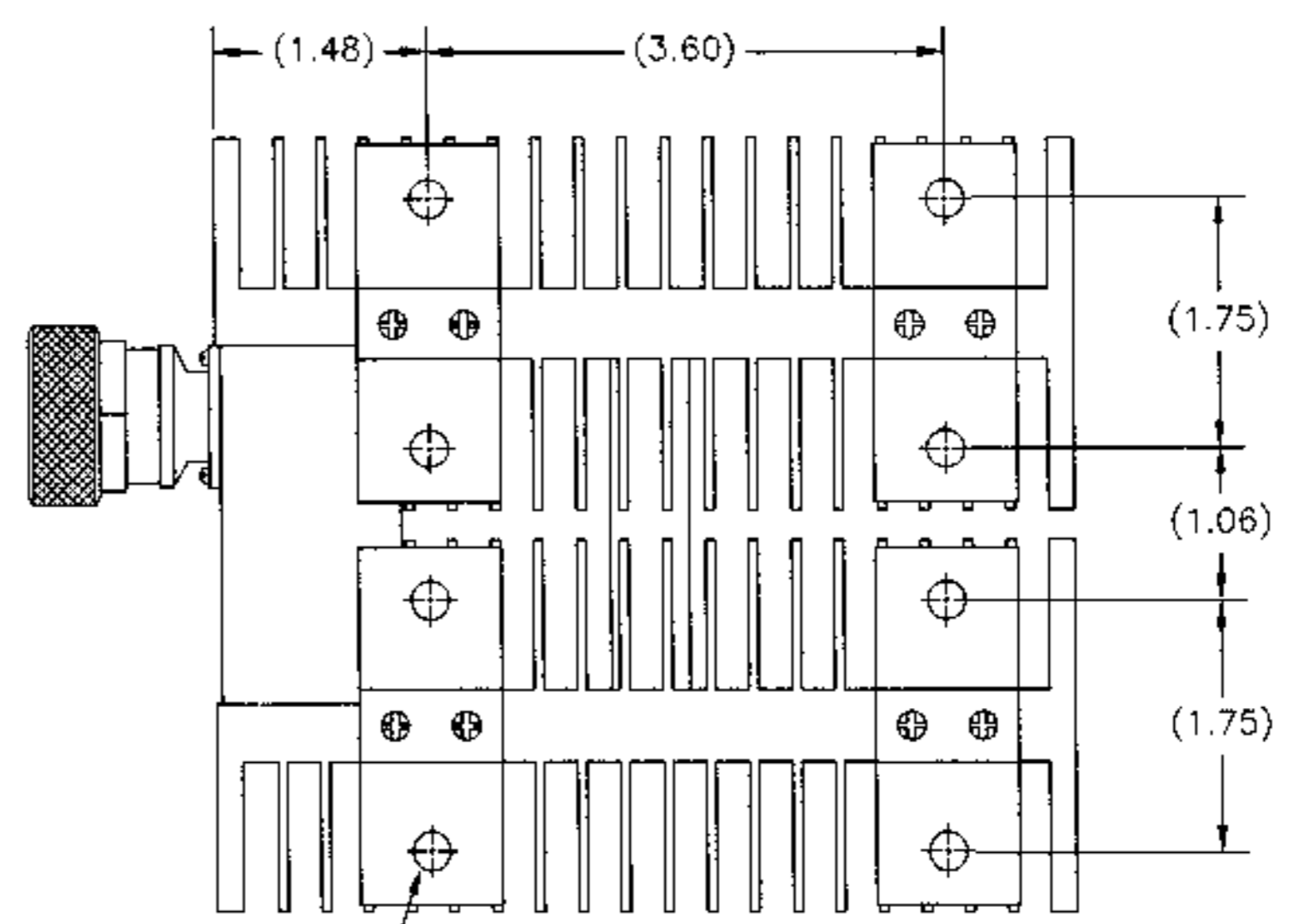
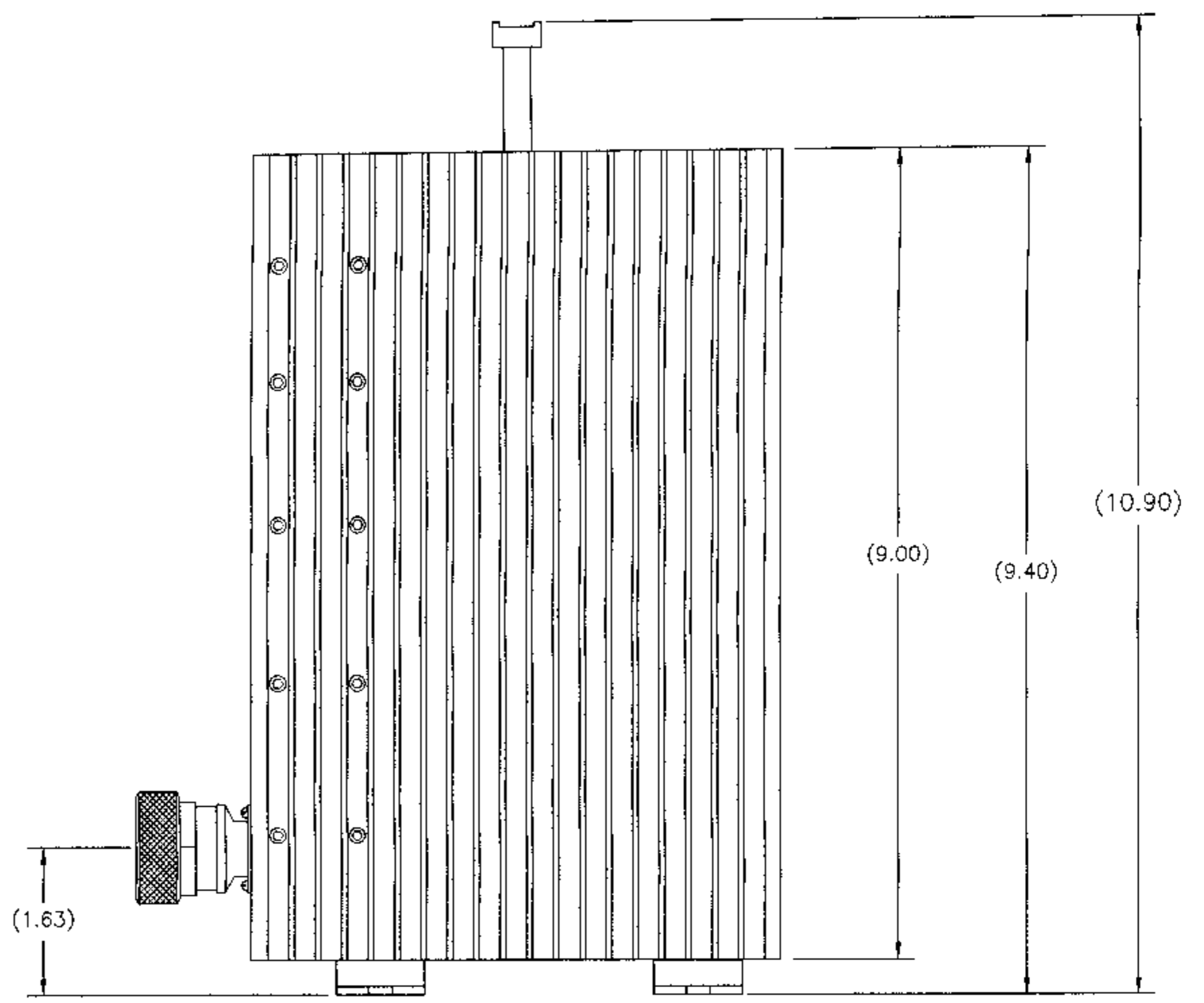
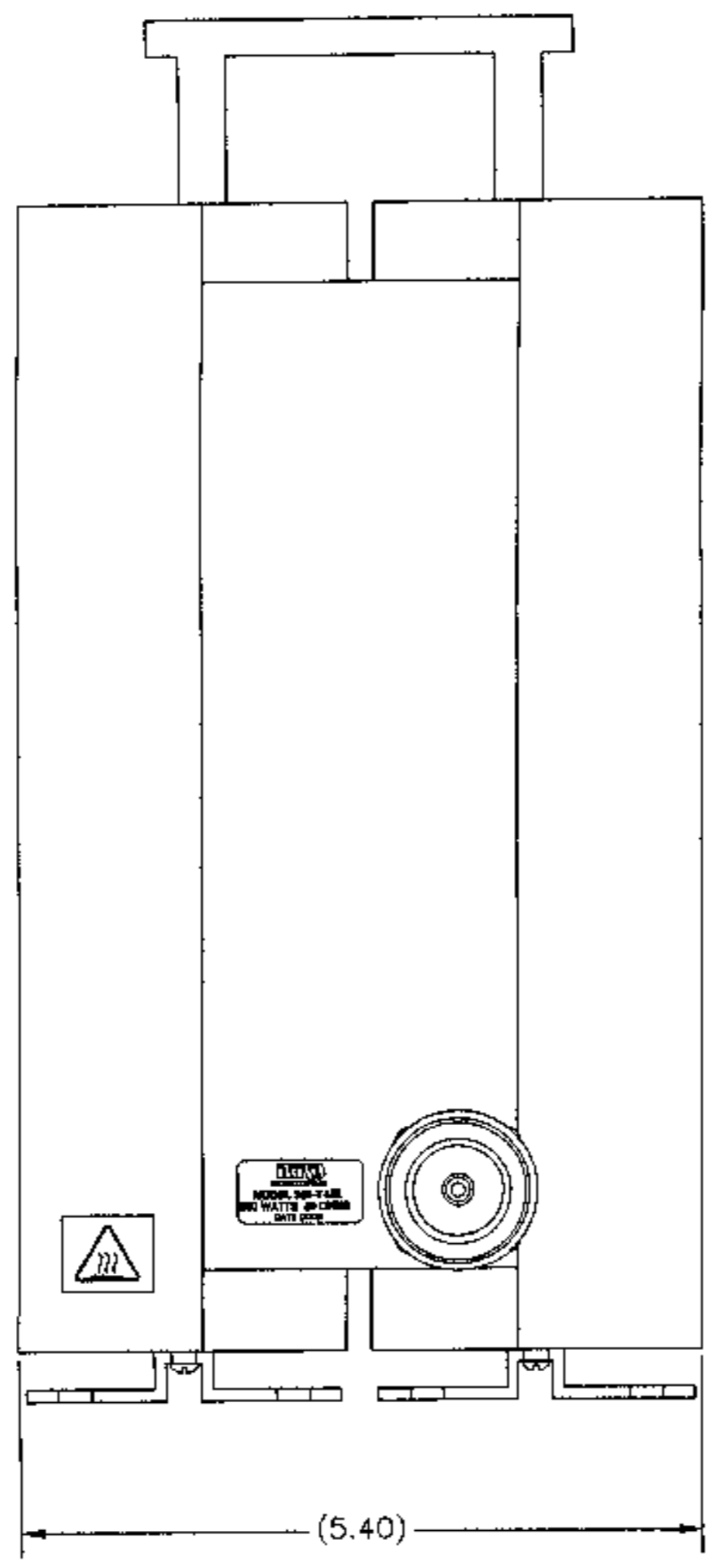
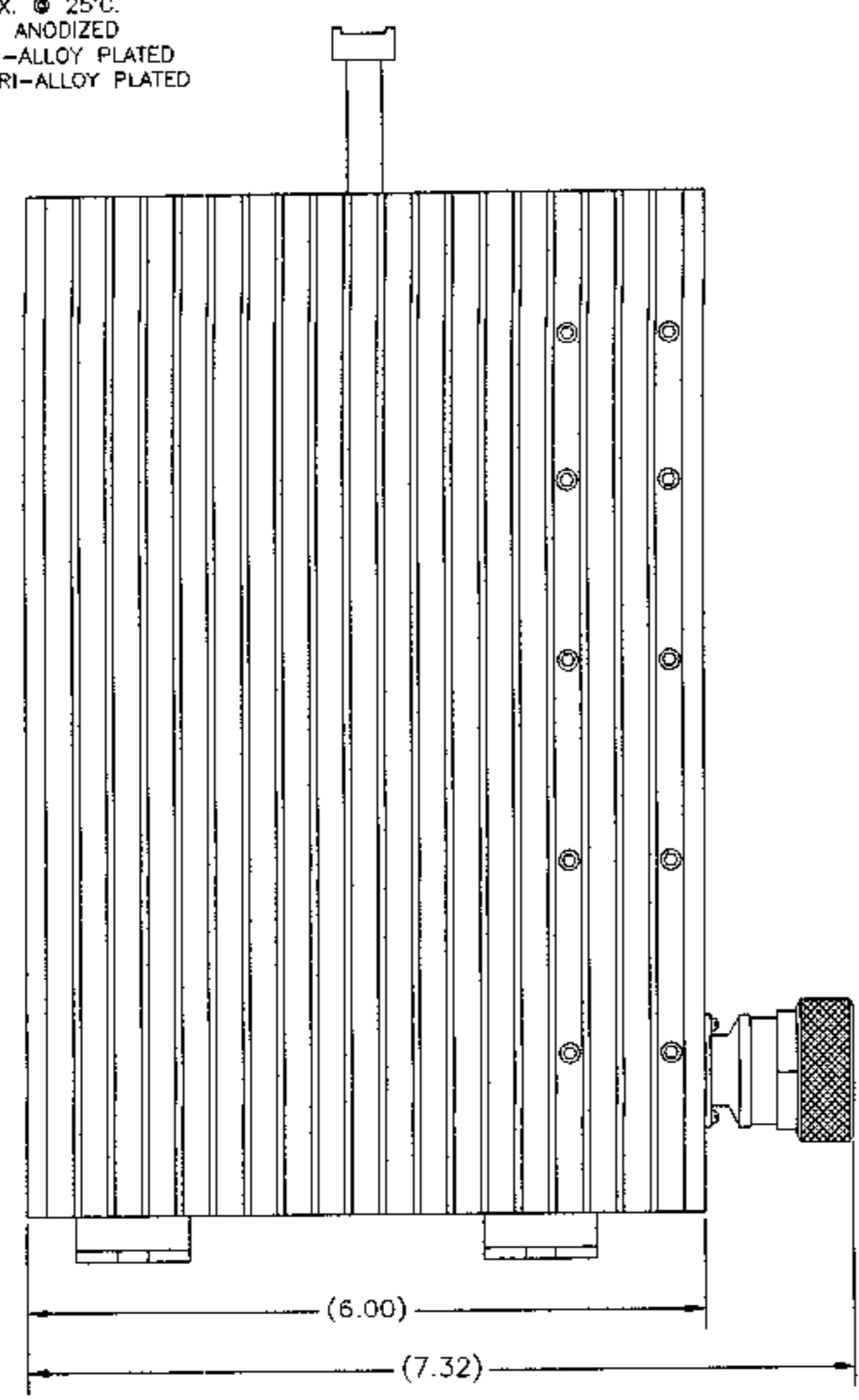


SPECIFICATIONS:
 IMPEDANCE: 50 OHMS NOMINAL
 FREQUENCY RANGE: DC TO 2.4GHz
 VSWR: 1.10:1 DC TO 1 GHz
 1.25:1 1 GHz TO 2.4GHz
 POWER RATING: 300 WATTS MAX. @ 40°C.
 360 WATTS MAX. @ 25°C.
 COOLING FIN: ALUMINUM, BLACK ANODIZED
 HEAT SPREADER: ALUMINUM, TRI-ALLOY PLATED
 CONNECTOR: IEC 7/16 MALE, TRI-ALLOY PLATED

REVISIONS				
ZONE	REV	DESCRIPTION	DATE	APPROVED
A	ECN #0264		9-14-00	<i>ml</i>



8X Ø1/4 THRU HOLES

DIMENSIONS HEREON ARE FOR CUSTOMER CONVENIENCE AND REFERENCE ONLY. TOLERANCE TO BE APPLIED ONLY WHERE INDIVIDUALLY STATED ON THE RESPECTIVE DIMENSION. -DO NOT SCALE DRAWING-

UNLESS OTHERWISE SPECIFIED DIMENSIONS ARE IN INCHES TOLERANCES ARE: FRACTIONS DECIMALS ANGLES 2/1/84 .010 .005 2.30° .005 .005 .005	MILLIMETERS 1:10 = 2.54 1:20 = 5.08	THIS DRAWING IS THE PROPERTY OF THE BRD ELECTRONIC CORPORATION. THE DESIGN AND SPECIFICATIONS DISCLOSED HEREON ARE PROPRIETARY AND SHALL NOT BE REPRODUCED, COPIED, NOR USED AS THE BASIS FOR THE MANUFACTURE OR SALE OF APPARATUS OR DEVICES WITHOUT THEIR EXPRESS WRITTEN CONSENT.	BRD Electronic Corporation Cleveland (Solon) Ohio USA
MATERIAL	APPROVALS DRAWN: D.M.FINK CHECKED: APPROVED: <i>MADEY</i>	DATE 5-28-03	TITLE TERMINATION, CONVECTION COOLED, 300W
TRISH	APPROVED: <i>MADEY</i>	DATE 6-15-03	SIZE: PCN NO. 70998 DWG. NO. 300-T-ME SCALE: 1:1 COUN. CODE: LD1 SHEET: 1 OF 1

DRAWING NO. 300-T-ME REV. A